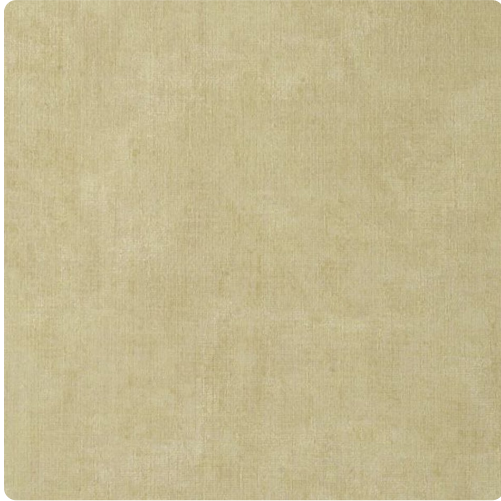


# Watermark Moire

6042WM – Buttermilk



Other Available Colors:



Stunning! When you want to make an impact, this rich textile effect from Len-Tex is guaranteed to be noticed. Not your traditional moiré, the uneven, wavy nature of this watermarked moiré creates a design which is distinctly different and modern. First introduced in a limited palette in the Paloma Collection, by Len-Tex, Watermark Moiré was so spectacular, that it begged to be shown in more colors! Offered now in a palette of 31 hues, this tip card dazzles with such rich silk colors as deep teal, plum, magenta, willow green and island blue.

## Specifications

Content Fabric-backed Vinyl

Width 54"

Weight (oz/lyd) 21

Weight (oz/sqyd) 14

Type Type II

Backing Osnaburg

Pattern Match Random reversible

Fire Rating Class A

Flame Spread 5

Smoke Developed 15

## Environmental Attributes

Recyclable

CA 01350

SCS IndoorAdvantage Gold

## Features

Printed with Water-Based inks

<https://www.mdcwall.com/go/sku/6042WM>