

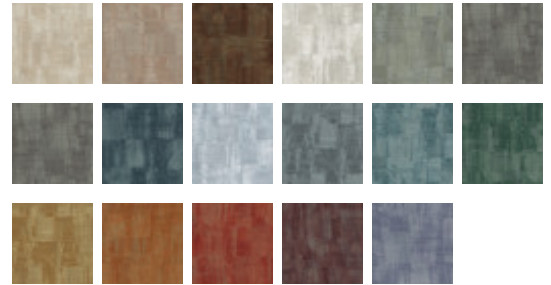
Brush Up

8115BU – Rose Madder



Inspired by painterly black and white textiles on the fashion runway, Brush Up perfectly captures the beauty of the brushstroke. With its distinct print mimicking the marks of a paintbrush, this pattern is available in a variety of tasteful colorways and is sure to add interest to any interior.

Other Available Colors:



Specifications

Content Non-woven backed Vinyl

Width 54"

Weight (oz/lyd) 20

Weight (oz/sqyd) 13.2

Type Type II

Backing Non-woven

Repeat 20" Vertical

Repeat 24" Vertical, 17 1/3" Horizontal

Pattern Match Half Drop Match

Fire Rating Class A

Flame Spread 10

Smoke Developed 10

Environmental Attributes

NSF 342

Contains Recycled Content

Recyclable

CA 01350

SCS IndoorAdvantage Gold

Features

post consumer recycled content

Printed with Water-Based inks

<https://www.mdcwall.com/go/sku/8115BU>