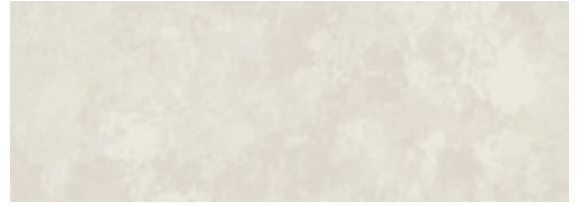


Turn To Stone

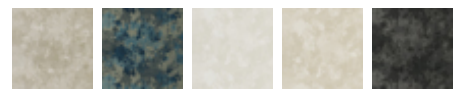
BBTS05 – Sandstone



Full Repeat:



Other Available Colors:



Whether you see mottled stone or cosmic effects, Turn to Stone is out of this world. This large-scale, organic design presents 6 monochromatic and multi-colored hues highlighted with a light touch of metallic.

Specifications

Content Fabric-backed Vinyl

Width 52"

Roll Length 30 yards

Weight (oz/lyd) 20

Weight (oz/sqyd) 13.33

Type Type II

Backing Osnaburg

Scrub Cycles 300

Repeat 24" Vertical, 52" Horizontal

Pattern Match Straight, Match

Fire Rating Class A

Flame Spread 20

Smoke Developed 45

Tensile Strength 50 warp/55 fill

Environmental Attributes

NSF 342

Contains Recycled Content

Recyclable

CA 01350

CHPS

Features

Heavy Metals Free

Formaldehyde free

Made in the USA

CE

<https://www.mdcwall.com/go/sku/BBTS05>