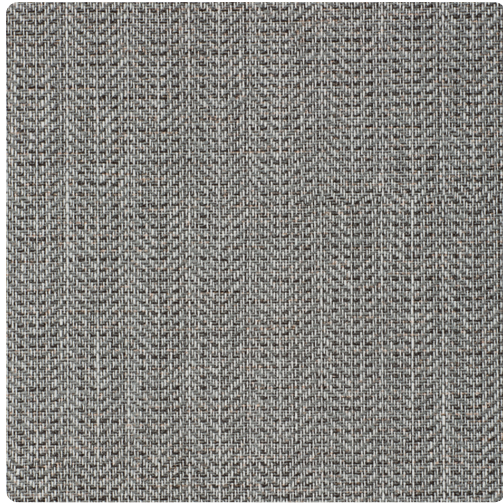


Well Suited

BBWS04 – Black Tie



Adjacent diagonal lines come to a point in Well Suited. Capturing the menswear influence, this herringbone texture is sure to win best dressed. The pattern debuts with 13 tailor made hues ready for the runway.

Other Available Colors:



Specifications

Content Fabric-backed Vinyl

Width 54"

Roll Length 30 yards

Weight (oz/lyd) 20

Weight (oz/sqyd) 13.33

Type Type II

Backing Osnaburg

Scrub Cycles 300

Pattern Match Random reversible

Fire Rating Class A

Flame Spread 20

Smoke Developed 45

Tensile Strength 50 warp/55 fill

Environmental Attributes

Contains Recycled Content

Recyclable

CA 01350

CHPS

Features

Heavy Metals Free

Formaldehyde free

Made in the USA

CE

<https://www.mdcwall.com/go/sku/BBWS04>