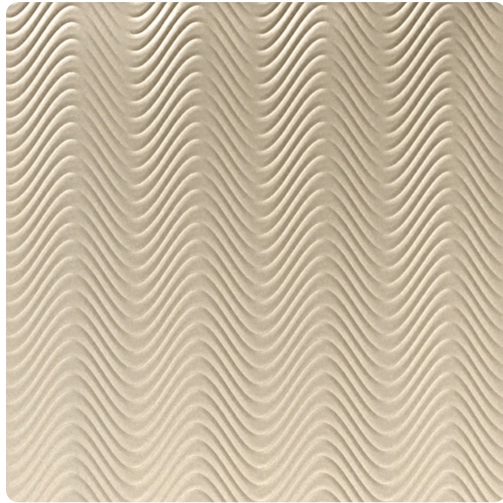


Sonic Ceiling

DCP2912-2X2DI – Almond



Drop-in ceiling tile. Also available in Glue-up as DCP2912-2X2GU

Other Available Colors:



Specifications

- Content High Impact Thermoplastic
- Panel Size 2' X 2'
- Weight 8 lbs per sheet
- Abrasion Resistance Hoffman Scratch Test 700 grams
- Solvent Resistance 50 MEK
- Heat Resistance Up to 140 degrees
- Fire Rating Class A
- UV Stability > 200 hours
- Flame Spread 25
- Smoke Developed 125

Features

- Custom Colors Available
- Trim Molding
- Made in the USA

<https://www.mdcwall.com/go/sku/DCP2912-2X2DI>