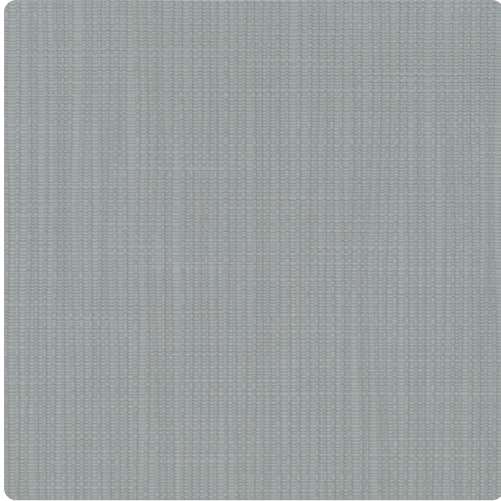


Moraine

EMR2804 – Spring



Moraine's deep texture and vertical pattern creates the perfect design for any space. Slightly alternating direction creates a dimensional design that adds interest to your walls.

Other Available Colors:



Specifications

Content Fabric backed Vinyl

Width 52/54"

Weight (oz/lyd) 25

Weight (oz/sqyd) 16.66

Backing Osnaburg

Pattern Match Random Straight Hang

Fire Rating Class A

Flame Spread 5

Smoke Developed 40

Environmental Attributes

CA 01350

<https://www.mdcwall.com/go/sku/EMR2804>