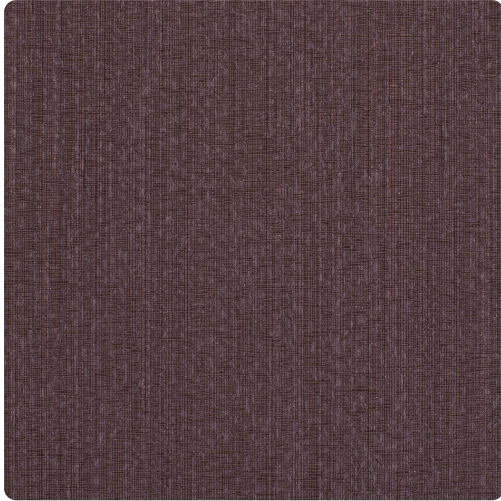


# Amana

ENV1144 – MAROON



Other Available Colors:



## Specifications

Contents Olefin Composite

Width 52" / 54"

Weight (oz/lyd) 20

Weight (oz/sqyd) 13.33

Type Type II

Backing Osnaburg

Pattern Match Random reversible

Fire Rating Class A

## Environmental Attributes

CA 01350

PVC Free

<https://www.mdcwall.com/go/sku/ENV1144>