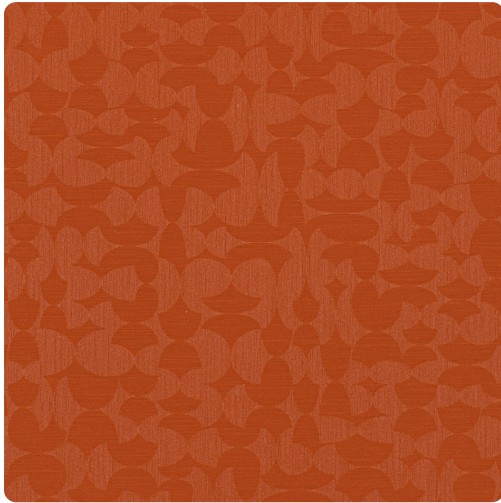


# Triton

ETI1001 – Tomato



Triton's mix of textures and finishes create a sophisticated yet subtle atmosphere. Contrasting monochrome tones add a flirtatious depth to the alternating curved patterns. Reminiscent of designer fabrics- Triton is available in 17 different colors.

Other Available Colors:



## Specifications

Content Fabric backed Vinyl

Width 52/54"

Weight (oz/lyd) 30

Weight (oz/sqyd) 20

Backing Osnaburg

Pattern Match Random reversible

Fire Rating Class A

Flame Spread 0

Smoke Developed 30

Tensile Strength 127x83

Tear Strength 25x25

## Environmental Attributes

CA 01350

<https://www.mdcwall.com/go/sku/ETI1001>