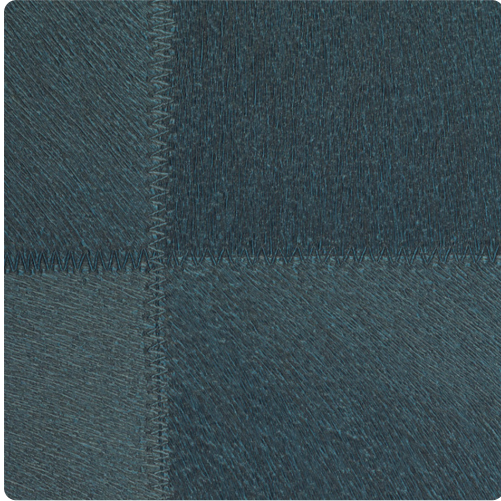


# Colt

ETL6612 – Peacock



With a design that mirrors leather, the large stitching and repeat pattern of Colt creates a rustic, eye-catching pattern, perfect for small and large spaces. The subtle, metallic sheen catches the light, while the largely neutral color offering holds true to its agrarian inspiration.

**Note: The final width of properly matched material will be approximately 51" wide (based on 6 repeats of the 8.5" variable width shapes.)**

Other Available Colors:



## Specifications

Content Fabric backed Vinyl

Width 54"

Weight (oz/lyd) 20

Weight (oz/sqyd) 13.33

Backing Osnaburg

Repeat 42" Vertical, 51" Horizontal

Pattern Match Non-reversible straight across match

Fire Rating Class A

Flame Spread 15

Smoke Developed 40

## Environmental Attributes

NSF 342

CA 01350

<https://www.mdcwall.com/go/sku/ETL6612>