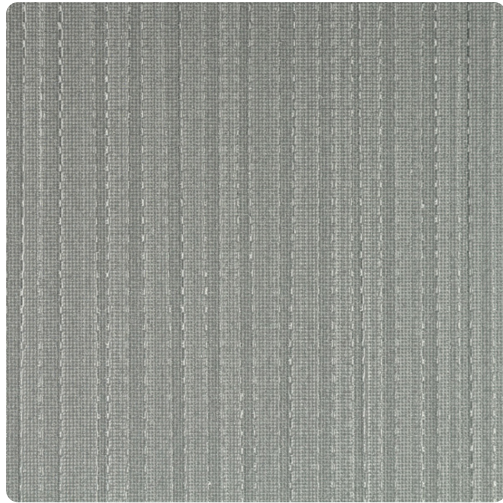


# Traction

ETN2302 – Chrome



Other Available Colors:



## Specifications

Content Fabric backed Vinyl

Width 52/54"

Weight (oz/lyd) 25

Weight (oz/sqyd) 16.66

Backing Osnaburg

Pattern Match Random reversible

Fire Rating Class A

Flame Spread 5

Smoke Developed 40

## Environmental Attributes

CA 01350

<https://www.mdcwall.com/go/sku/ETN2302>