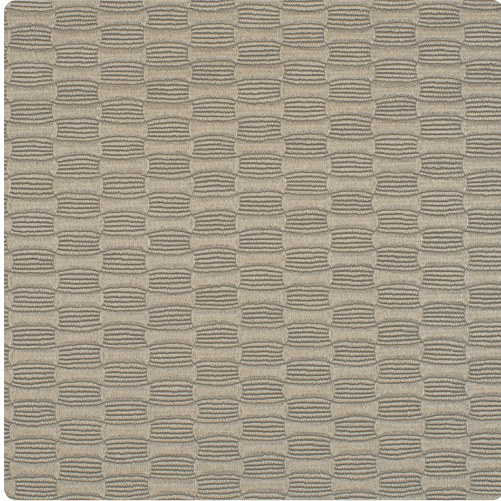


Collection: Jonathan Mark Designs

Luna

JLU9005 – Touch Of Grey



Luna was inspired by a swatch of hand woven textile, interpreted in with a deeply embossed effect that is decorated with a metallic lustre. When viewing it on the wall, it has the look of an authentic loomed textile. The color palette begins with whisper soft neutrals and finishes with clean fresh feature tones.

Other Available Colors:



Specifications

Content Fabric backed Vinyl

Width 54"

Weight (oz/lyd) 20

Weight (oz/sqyd) 13.33

Type Type II

Backing Osnaburg

Pattern Match Reversible straight across match

Fire Rating Class A

Flame Spread 15

Smoke Developed 40

Features

Printed with Water-Based inks

<https://www.mdcwall.com/go/sku/JLU9005>