

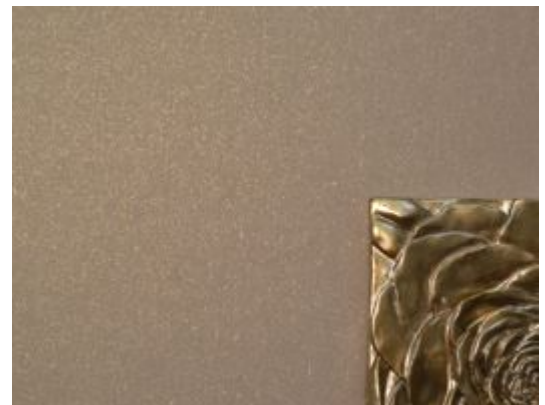
# Twinkle

JTW6113 – Penny Lane



This new design from Jonathan Mark steals the spotlight with its glamorous color pallet and eye-catching shimmer. With its circular print, Twinkle will capture the light and add dimension to any surface.

Other Available Colors:



## Specifications

Content Fabric backed Vinyl

Width 54"

Weight (oz/lyd) 20

Weight (oz/sqyd) 13.33

Type Type II

Backing Osnaburg

Pattern Match Random reversible

Fire Rating Class A

Flame Spread 15

Smoke Developed 40

## Features

Printed with Water-Based inks

<https://www.mdcwall.com/go/sku/JTW6113>