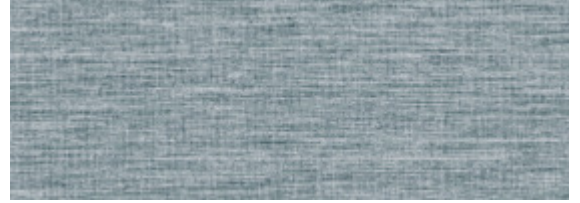


Argenti

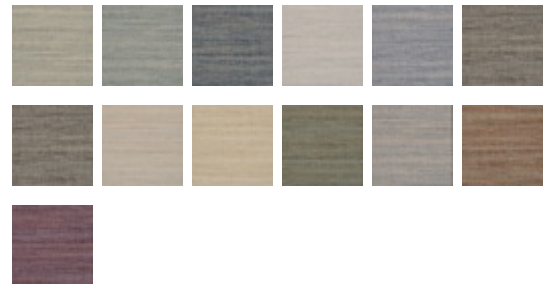
MAG1503 – Dockside



Full Repeat:



Other Available Colors:



Specifications

Width 52/54"

Weight (oz/lyd) 20

Weight (oz/sqyd) 13.33

Type Type II

Backing Osnaburg

Pattern Match Random reversible

Fire Rating Class A

Environmental Attributes

NSF 342

LEED Compliant

CA 01350

<https://www.mdcwall.com/go/sku/MAG1503>