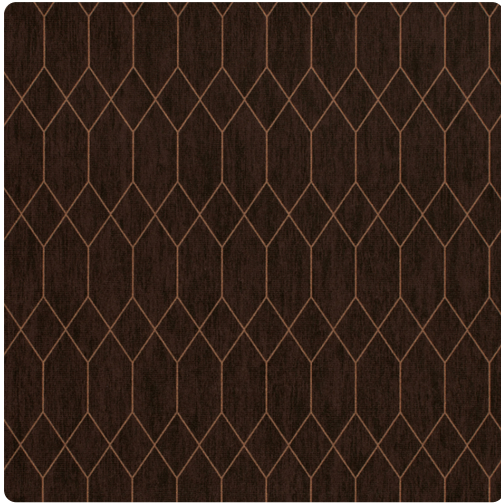


# Brixton

MBX9309 – Carmine



Brixton captures the artistic nuance of cathedral architecture. Recognized for its large expanses of glass, sharply pointed spires, and ribbed vaults; Brixton adds a dynamic mid-scale design element to any space. Boasting a palette of 17 colors etched with a sharp metallic design; Brixton takes you from rich Sherwood Forest green, Carmine burgundy, and Firelight copper to cool and warm neutrals such as Alba white and Travertine beige.

Other Available Colors:



## Specifications

Content Fabric backed Vinyl

Width 52/54"

Weight (oz/lyd) 20

Weight (oz/sqyd) 13.33

Type Type II

Backing Non-woven

Pattern Match Reversible straight across match

Fire Rating Class A

Flame Spread 15

Smoke Developed 20

## Environmental Attributes

NSF 342

CA 01350

## Features

Pre consumer recycled content

<https://www.mdcwall.com/go/sku/MBX9309>