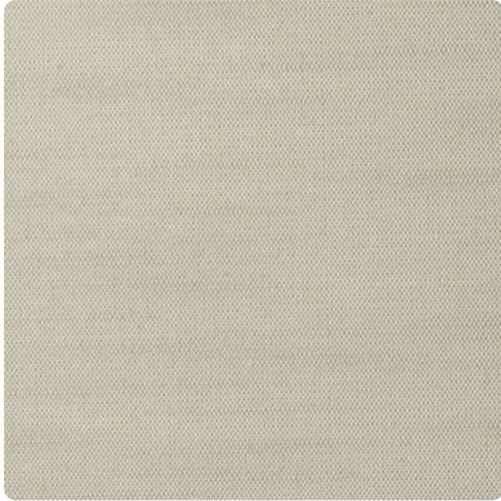


Crete

MCA3504 – Taupe

Other Available Colors:



Specifications

Content Polyester

Width 54"

Weight (oz/lyd) 11

Weight (oz/sqyd) 7.33

Type High

Backing Acrylic

Pattern Match Random reversible

Fire Rating Class A

Flame Spread 10

Smoke Developed 0

Perm Rating 114.6

<https://www.mdcwall.com/go/sku/MCA3504>