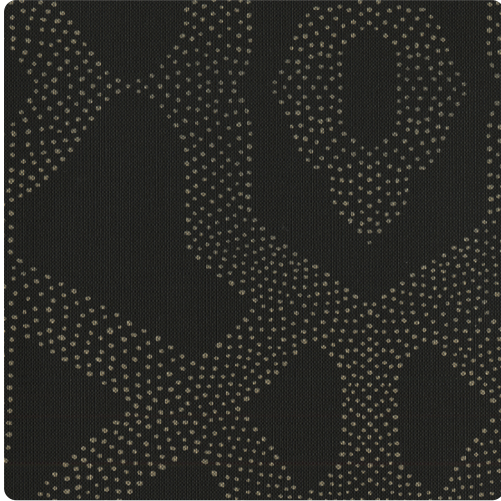


Collection: Candice Olson Couture

Allure

MCD1932 – Ebony



Industrialized scrolls of gates and ironwork, rendered in mehndi style, become both fresh and charming for a modern approach which highlights beauty in the workaday. Strong lines, rendered in a pointelle of delicate metallic dots, create a palette of nine warm workable colors. Pattern "Allure" is designed for both durability and longevity, much like its practically crafted inspiration.

Other Available Colors:



Specifications

Content Fabric-backed Vinyl

Width 54"

Weight (oz/lyd) 20

Weight (oz/sqyd) 13.33

Type Type II

Backing Non-woven

Repeat 25 1/4" Vertical

Pattern Match Reversible straight across match

Fire Rating Class A

Flame Spread 25

Smoke Developed 45

Environmental Attributes

CA 01350

<https://www.mdcwall.com/go/sku/MCD1932>