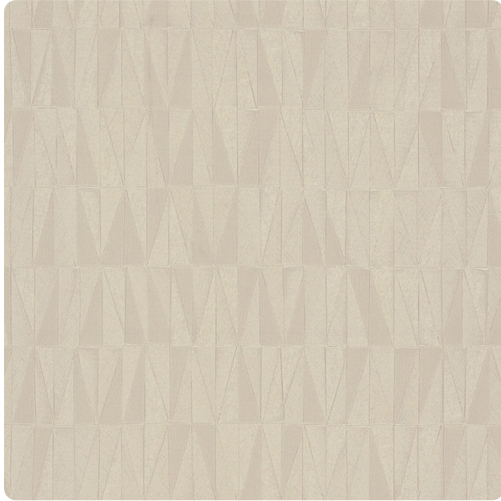


Collection: Candice Olson Couture

Geometrica

MCO2212 – Champagne



Monochromatic shimmering half triangles and rectangles are created through multiple textural patterns, juxtaposed to give textural depth of field. Printed on a vinyl surface with an Osnaburg fabric backing, this highly durable commercial wallcovering guarantees a reliable bond between the wallcovering and the wall with superior stability that rounds corners easily and meets Type II requirements of CCC-W-408A. in this contemporary nine color palette. Geometrica is available in a palette of nine color choices.

Other Available Colors:



Specifications

Content Fabric-backed Vinyl

Width 54"

Weight (oz/lyd) 20

Weight (oz/sqyd) 13.33

Type Type II

Backing Osnaburg

Pattern Match Random reversible

Fire Rating Class A

Flame Spread 20

Smoke Developed 20

Environmental Attributes

NSF 342

LEED Compliant

Contains Recycled Content

CA 01350

Features

post consumer recycled content

<https://www.mdcwall.com/go/sku/MCO2212>