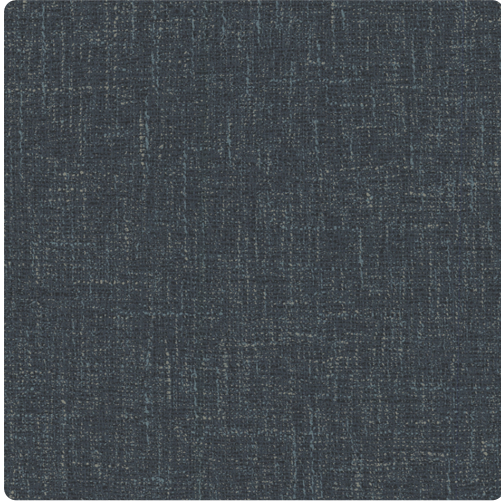


Collection: Candice Olson Couture

Posh

MCO2270 – Ink



Nubby weave suiting fabric inspires a textural woven pattern with all the warmth and luxury of fine wools. Offered in a sumptuous nine color palette of rich earth tones, it is designed to add comfort to any space. Printed on a vinyl surface with non-woven substrate backing, this highly durable commercial wallcovering smooths effortlessly, is easy to remove, and meets Type II requirements of CCC-W-408A.

Other Available Colors:



Specifications

Content Fabric-backed Vinyl

Width 54"

Weight (oz/lyd) 20

Weight (oz/sqyd) 13.33

Type Type II

Backing Non-woven

Pattern Match Random reversible

Fire Rating Class A

Flame Spread 15

Smoke Developed 10

Environmental Attributes

NSF 342

LEED Compliant

Contains Recycled Content

CA 01350

<https://www.mdcwall.com/go/sku/MCO2270>