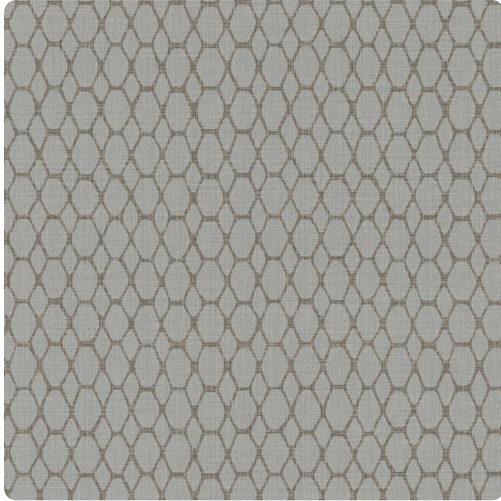


# Linx

MCO2283 – Zinc



Other Available Colors:



## Specifications

Content Non-woven backed Vinyl

Width 54"

Weight (oz/lyd) 20

Weight (oz/sqyd) 13.33

Type Type II

Backing Non-woven

Repeat 6.3125" Vertical

Pattern Match Non-reversible straight across match

Fire Rating Class A

Flame Spread 25

Smoke Developed 45

## Environmental Attributes

CA 01350

<https://www.mdcwall.com/go/sku/MCO2283>