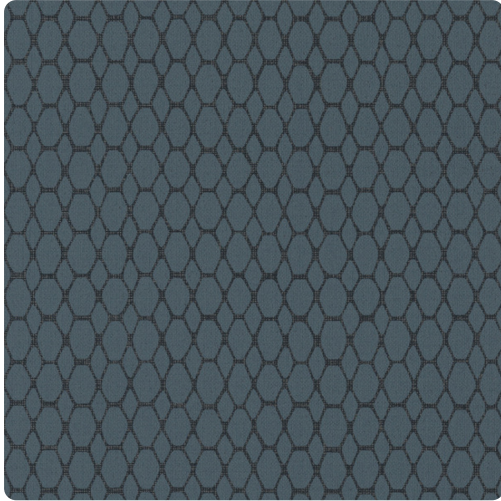


Linx

MCO2289 – Ink



Other Available Colors:



Diminutive cabled texture supports the elongated tiles of pattern Linx, giving this urban geometric the impression of a chain link of diamonds and octagons. The seven-color palette of mineral and earth tones creates a low contrast effect of subtle shine with softened, contemporary glamour. Printed on a vinyl surface with non-woven substrate backing, this highly durable commercial wallcovering smooths effortlessly, is easy to remove, and meets Type II requirements of CCC-W-408A.

Specifications

Content Non-woven backed Vinyl

Width 54"

Weight (oz/lyd) 20

Weight (oz/sqyd) 13.33

Type Type II

Backing Non-woven

Repeat 6.3125" Vertical

Pattern Match Non-reversible straight across match

Fire Rating Class A

Flame Spread 25

Smoke Developed 45

Environmental Attributes

CA 01350

<https://www.mdcwall.com/go/sku/MCO2289>