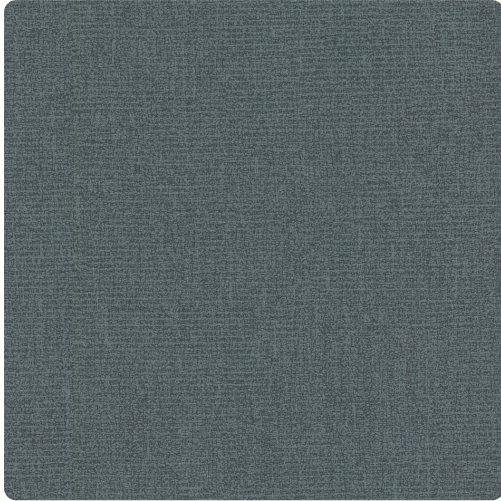


**Collection: Candice Olson Couture**

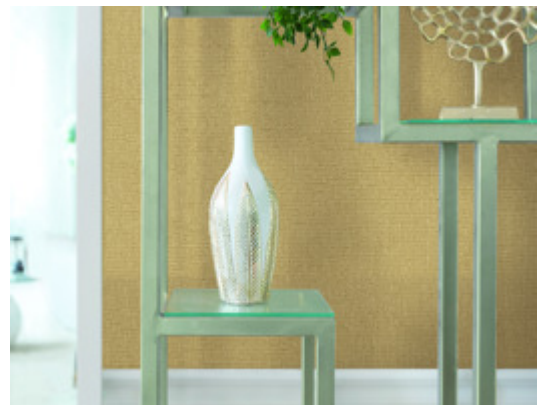
# Patina

MCO2326 – Reef



The crimped, tightly woven texture of this power pattern has the feel of a luxury handloomed woolen. A thoughtful palette of thirteen combines designer shades, naturals, and classic neutrals in a broad-spectrum array of metallic and matte finishes that allows versatility of placement from supporting anchor to high-profile highlight. Printed on a vinyl surface with an Osnaburg fabric backing, this highly durable commercial wallcovering guarantees a reliable bond between the wallcovering and the wall with superior stability that rounds corners easily and meets Type II requirements of CCC-W-408A.

Other Available Colors:



## Specifications

Content Fabric-backed Vinyl

Width 52"

Weight (oz/lyd) 20

Weight (oz/sqyd) 13.33

Type Type II

Backing Osnaburg

Pattern Match Random reversible

Fire Rating Class A

Flame Spread 20

Smoke Developed 20

## Environmental Attributes

CA 01350

<https://www.mdcwall.com/go/sku/MCO2326>