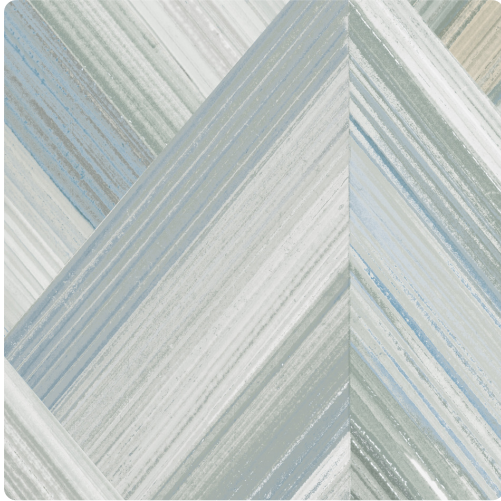


Mindful

MCO2334 – Mist



Other Available Colors:



A variegated overlay, inspired by the natural mosaic woods of hand laid parquet, the diamond pattern of this classic geometric possess a streamlined elegance when printed on shimmering Mylar. The modern palette has a balanced purity of organic color supported by linear accents of luminous shine. Featuring metallic foil accents and printed on a vinyl surface with non-woven substrate backing, this highly durable commercial wallcovering smooths effortlessly, is easy to remove, and meets Type II requirements of CCC-W-408A.

Specifications

Content Non-woven backed Vinyl

Width 50.5"

Weight (oz/lyd) 20

Weight (oz/sqyd) 13.33

Type Type II

Backing Non-woven

Repeat 60" Vertical

Pattern Match Non-reversible straight across match

Fire Rating Class A

Flame Spread 20

Smoke Developed 15

Environmental Attributes

CA 01350

<https://www.mdcwall.com/go/sku/MCO2334>