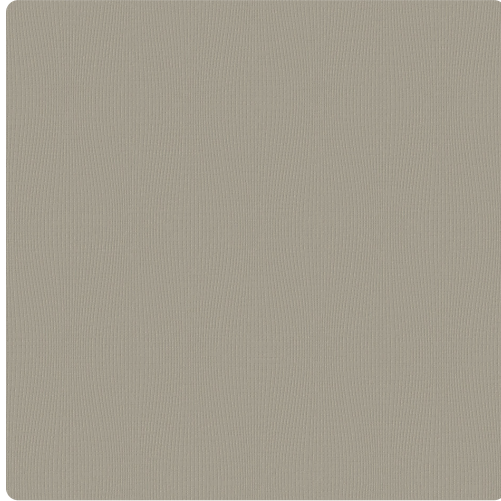


Prose

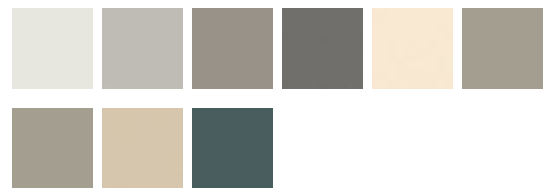
MCO2406 – Sandstone



Full Repeat:



Other Available Colors:



Specifications

Width 52"

Weight 20oz Type II

Backing Osnaburg

Pattern Match Reversible Hang, Straight Match

Fire Rating ASTM E84 Class A Fire Rated

<https://www.mdcwall.com/go/sku/MCO2406>