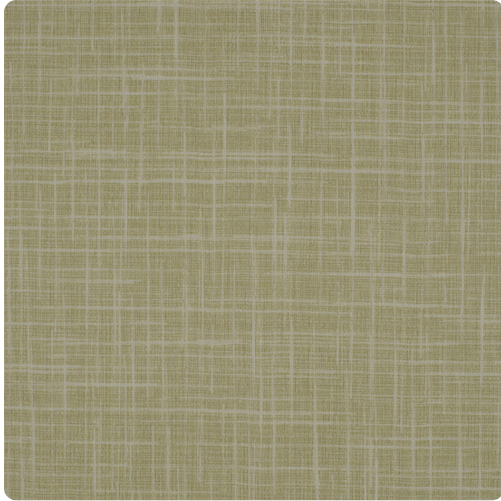


Spartan

MDV1007 – Tea Leaf



Duratec is a high-performance wall protection solution designed for demanding environments. Built for your walls with the durability of a floor covering, it resists impact, scratches, stains, abrasions, and graffiti. Its cleanable surface stands up to alcohol, ammonia, full-strength bleach, and simple soap and water, making it ideal for high-traffic areas where long-term performance matters. With a versatile range of patterns and colorways, Duratec delivers resilient protection without sacrificing style.

Other Available Colors:



Specifications

Width 50-52"

Thickness .035"

Weight (oz/lyd) 38

Backing Poly-cotton drill

Abrasion Resistance Less than .05% (wt. loss %)

Pattern Match Random reversible

Fire Rating Class A

Tensile Strength 200x118 (MD x CD)

Tear Strength 3200/3200 (MD x CD)

Impact Resistance 135 (lbs/ft)

<https://www.mdcwall.com/go/sku/MDV1007>