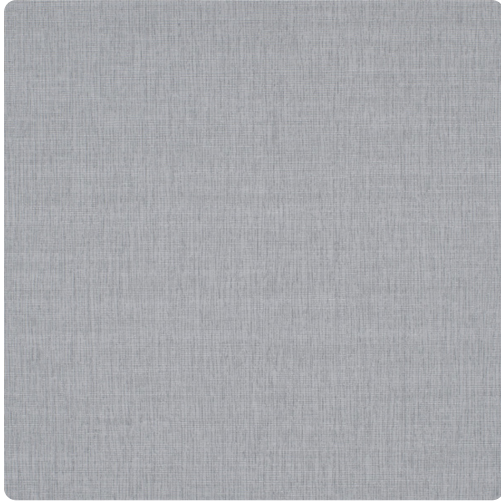
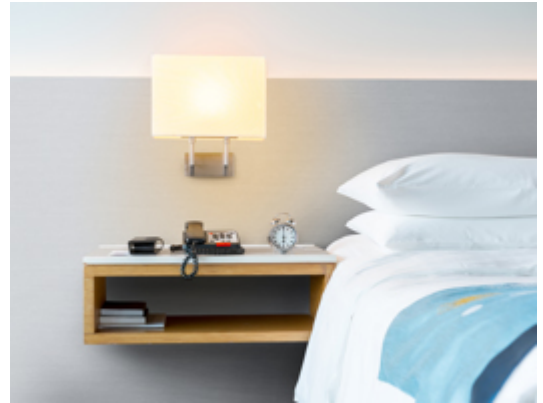


# Intrepid

MDV1081 – Storm



Other Available Colors:



## Specifications

Width 50-52"

Thickness .035"

Weight (oz/lyd) 38

Backing Poly-cotton drill

Abrasion Resistance Less than .05% (wt. loss %)

Pattern Match Random reversible

Fire Rating Class A

Tensile Strength 200x118 (MD x CD)

Tear Strength 3200/3200 (MD x CD)

Impact Resistance 135 (lbs/ft)

<https://www.mdcwall.com/go/sku/MDV1081>