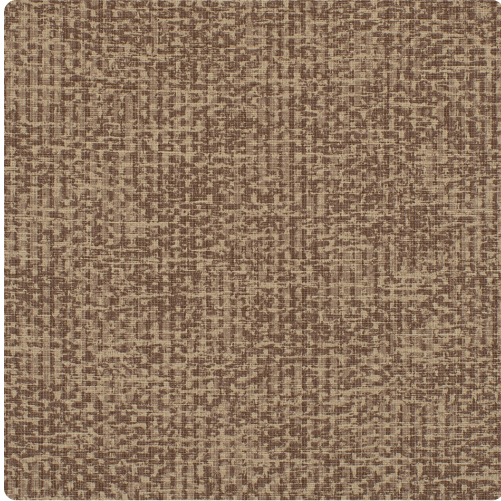


Esperi

MDV8042 – Mocha



Full Repeat:



Other Available Colors:



Specifications

Width 52-54"

Thickness .034"

Weight (oz/lyd) 33

Backing Poly-cotton drill

Abrasion Resistance Less than .05% (wt. loss %)

Pattern Match Random reversible

Fire Rating Class A

Tensile Strength 130x100 (MD x CD)

Tear Strength 3200/3200 (MD x CD)

Impact Resistance 115 (lbs/ft)

Environmental Attributes

PVC Free

<https://www.mdcwall.com/go/sku/MDV8042>