

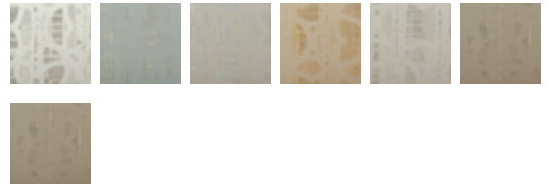
Montage

MHC1382 – Clay



Montage, a new Handcrafted design, demonstrates the custom crafting and luxurious design that sets this collection apart. The modern pattern combines with a pearlescent finish that creates a chic, upscale space.

Other Available Colors:



Specifications

Content Polyester/Cellulose

Width 27"

Weight (oz/lyd) 32

Weight (oz/sqyd) 21.33

Backing Non-woven

Repeat 6.5" Vertical

Pattern Match Straight Across Match

Fire Rating Class A

Flame Spread 25

Smoke Developed 80

<https://www.mdcwall.com/go/sku/MHC1382>