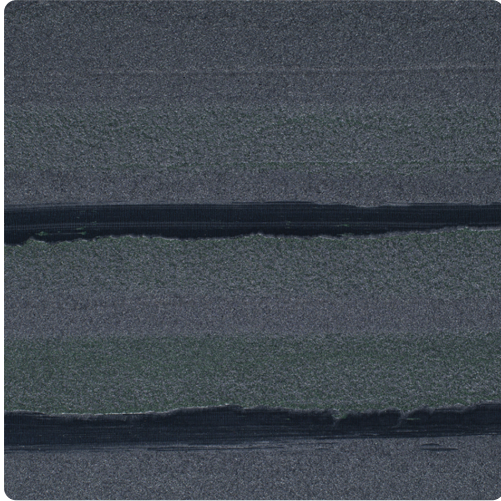


# Rosetta

MHC1404 – Santorini



Rosetta is carefully handcrafted in a way that inspires a smooth natural appearance that evokes images of serene nature. A soft texture and streaks of metallic highlight the horizontal pattern. Seven stunning colorways complete the design, ranging from neutrals to a truly surprising red.

Other Available Colors:



## Specifications

Content Polyester/Cellulose

Width 27"

Weight (oz/lyd) 32

Weight (oz/sqyd) 21.33

Backing Non-woven

Pattern Match Random non-reversible

Fire Rating Class A

Flame Spread 25

Smoke Developed 80

<https://www.mdcwall.com/go/sku/MHC1404>