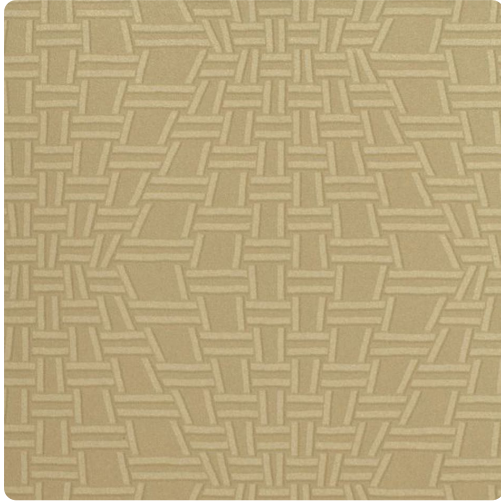


# Gideon

MLG2607 – Grey Dove



Other Available Colors:



Suggest this design for graphic impact! Gideon is representative of a woven straw, but the clean interpretation and secondary diamond motif impart something much more contemporary.

## Specifications

Content Fabric-backed Vinyl

Width 52/54"

Weight (oz/lyd) 20

Weight (oz/sqyd) 13.33

Type Type II

Backing Non-woven

Repeat 4.5" Vertical, 5.5" Horizontal

Pattern Match Non-reversible straight across match

Fire Rating Class A

Flame Spread 15

Smoke Developed 20

## Environmental Attributes

NSF 342

CA 01350

## Features

Pre consumer recycled content

<https://www.mdcwall.com/go/sku/MLG2607>