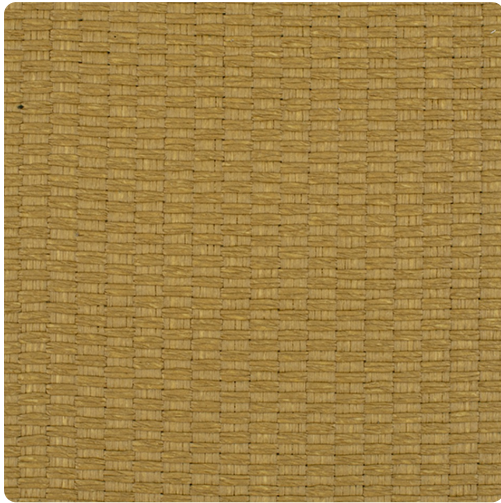


Kielce

MNR1287 – Paloma

Other Available Colors:



The Natural Resources collection is comprised of rapidly renewable materials including sisal, paperweaves, jute, cork, burlap, and linen. Each distinctive pattern is comprised of sustainably harvested natural fibers which are colored using vegetable based dyes before being handwoven using centuries old techniques.

Specifications

Contents Paper

Width 36"

Backing Paper

Pattern Match Random Match

Fire Rating A

Packaging Information Packaged in 8 yard bolts

<https://www.mdcwall.com/go/sku/MNR1287>