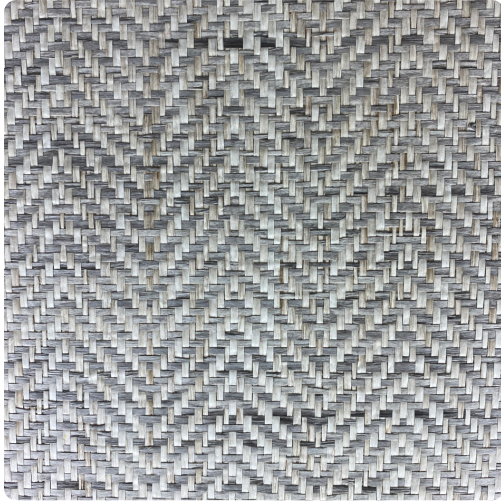


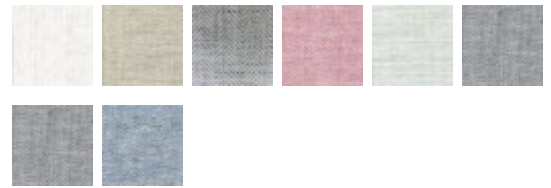
Collection: The Naturals Collection

Kanna Chevron

MNR2026 – Slate



Other Available Colors:



The Natural Resources collection is comprised of rapidly renewable materials including sisal, paperweaves, jute, cork, burlap, and linen. Each distinctive pattern is comprised of sustainably harvested natural fibers which are colored using vegetable based dyes before being handwoven using centuries old techniques.

Specifications

Contents Japanese Paperweave

Width 36"

Backing Paper

Pattern Match Random Match

Fire Rating A

Packaging Information Packaged in triple roll bolts (12

YDS)

<https://www.mdcwall.com/go/sku/MNR2026>