

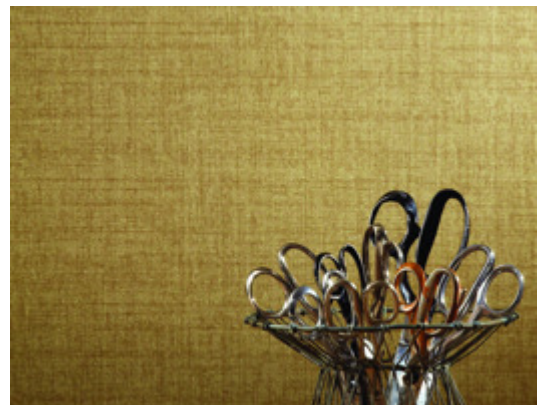
# Library

MRE1203 – Rotary



This could be a functional geo-textile or it could be a woven sharkskin material for a lady's suit. Appearances can be deceiving, but the slight texture and minimal crosshatched design do make this wallcovering resemble fabric, while the vinyl composition makes it durable and scrubbable.

Other Available Colors:



## Specifications

Content Non-woven backed Vinyl

Width 54"

Weight (oz/lyd) 20

Weight (oz/sqyd) 13.33

Type Type II

Backing Non-woven

Pattern Match Random reversible

Fire Rating Class A

Flame Spread 25

Smoke Developed 35

## Environmental Attributes

NSF 342

CA 01350

<https://www.mdcwall.com/go/sku/MRE1203>