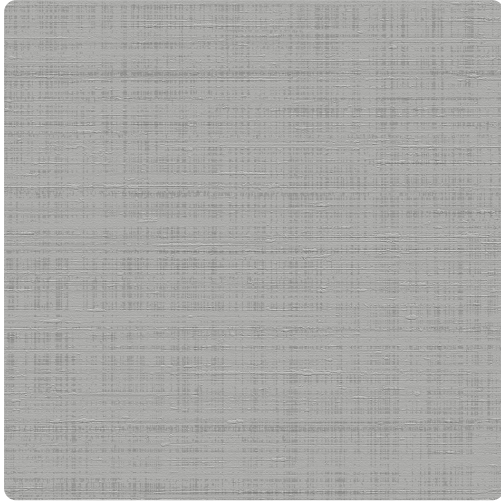


District Silk

MRE1458 – Platform



Full Repeat:



Other Available Colors:



The streamlined simplicity of industrial design has become a modern classic, sophisticated yet warmed by aged patina in Restoration Elements Wallcoverings; it defines the aesthetic of a new generation. Printed on a vinyl surface with non-woven substrate backing, this highly durable commercial wallcovering smooths effortlessly, is easy to remove, and meets Type II requirements of CCC-W-408A. Resembling matte concrete and featuring woven shimmer, District Silk pattern creates a modern homage to the elegance of silk weave in a beautifully useable nine color palette.

Specifications

Content Non-woven backed Vinyl

Width 54"

Weight (oz/lyd) 20

Weight (oz/sqyd) 13.33

Weight 20 oz. Type II

Type Type II

Backing Non-woven

Pattern Match Non-Reversible/Random

Fire Rating ASTM E84 Class A Fire Rated

Environmental Attributes

NSF 342

CA 01350

Features

Anti-Microbial Additive

<https://www.mdcwall.com/go/sku/MRE1458>