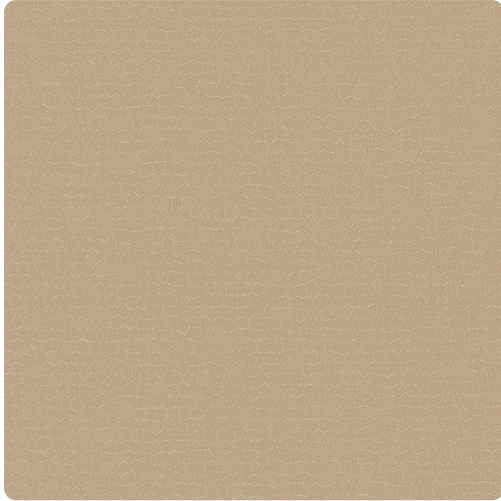


**Collection: Restoration Elements**

# Blacksmith

MRE1473 – Glimmer



Blacksmith Wallcoverings from Restoration Elements features hand hammered metal on a deeply textured small print, whose dry brush effect of raised metallic implies an organic hive. Printed on a vinyl surface with an Osnaburg fabric backing, this highly durable commercial wallcovering guarantees a reliable bond between the wallcovering and the wall with superior stability that rounds corners easily and meets Type II requirements of CCC-W-408A. Blacksmith is available in a palette of eleven color choices.

Other Available Colors:



## Specifications

Content Fabric backed Vinyl

Width 54"

Weight (oz/lyd) 20

Weight (oz/sqyd) 13.33

Type Type II

Backing Osnaburg

Pattern Match Random reversible

Fire Rating Class A

Flame Spread 20

Smoke Developed 20

## Environmental Attributes

NSF 342

CA 01350

<https://www.mdcwall.com/go/sku/MRE1473>