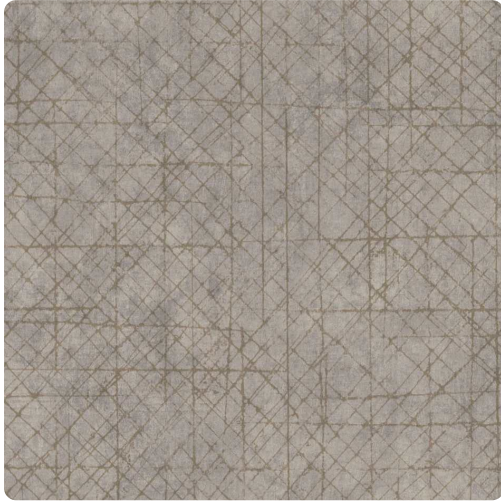


Voltage

MRE1576 – River Haze



Pattern Voltage has sketched lines which move across a textural plaster ground to emulate a vision of high-tension wires, intersecting in a geometry of industrial style. The seven-color palette is defined by its industrial metal and mineral references. Printed on a vinyl surface with non-woven substrate backing, this highly durable commercial wallcovering smooths effortlessly, is easy to remove, and meets Type II requirements of CCC-W-408A.

Other Available Colors:



Specifications

Content Non-woven backed Vinyl

Width 54"

Weight (oz/lyd) 20

Weight (oz/sqyd) 13.33

Type Type II

Backing Non-woven

Repeat 25.25" Vertical

Pattern Match Non-reversible straight across match

Fire Rating Class A

Environmental Attributes

NSF 342

CA 01350

<https://www.mdcwall.com/go/sku/MRE1576>