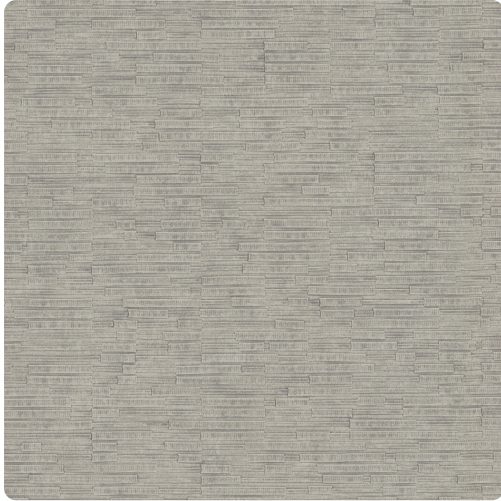


Lintel

MRE1629 – Nickel



Other Available Colors:



Specifications

Content Fabric backed Vinyl

Width 52"

Weight (oz/lyd) 24

Weight (oz/sqyd) 16

Type Type II

Backing Osnaburg

Pattern Match Random reversible

Fire Rating Class A

Flame Spread 25

Smoke Developed 85

Environmental Attributes

NSF 342

CA 01350

<https://www.mdcwall.com/go/sku/MRE1629>