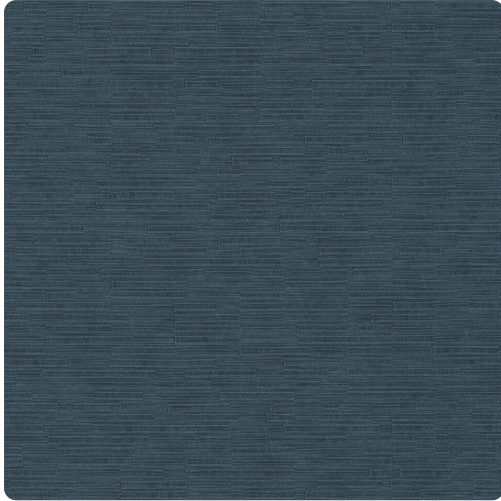


Lintel

MRE1637 – Ink Press



Inspired by decorative architectural entranceway supports, the deeply embossed horizontal stacked stone and bridge pattern becomes a textural backdrop of classical geometric design. Twelve colors offer a broad-spectrum palette of monochrome options influenced by natural building materials. Printed on a vinyl surface with an Osnaburg fabric backing, this highly durable commercial wallcovering guarantees a reliable bond between the wallcovering and the wall with superior stability that rounds corners easily and meets Type II requirements of CCC-W-408A.

Other Available Colors:



Specifications

Content Fabric backed Vinyl

Width 52"

Weight (oz/lyd) 24

Weight (oz/sqyd) 16

Type Type II

Backing Osnaburg

Pattern Match Random reversible

Fire Rating Class A

Flame Spread 25

Smoke Developed 85

Environmental Attributes

NSF 342

CA 01350

<https://www.mdcwall.com/go/sku/MRE1637>