

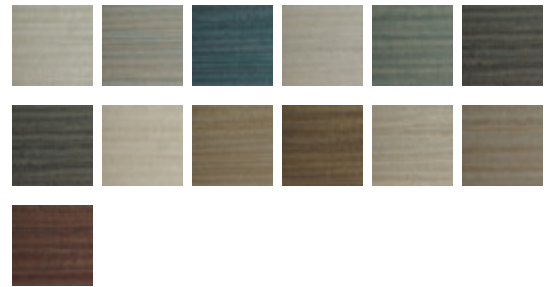
# Revie

MRV2707 – Carbon



Inspired by glazed pottery, Revie is a delicate, horizontal design that will fit seamlessly into any space. Its 13-colorway palette is comprised of earthy clays, neutrals and aquatics that mimic the best of high-end stoneware.

Other Available Colors:



## Specifications

Content Fabric backed Vinyl

Width 52/54"

Weight (oz/lyd) 20

Weight (oz/sqyd) 13.33

Type Type II

Backing Osnaburg

Pattern Match Random reversible

Fire Rating Class A

Flame Spread 5

Smoke Developed 35

## Environmental Attributes

NSF 342

CA 01350

<https://www.mdcwall.com/go/sku/MRV2707>