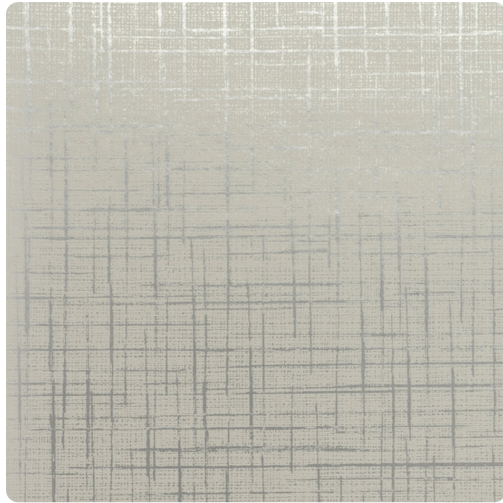


# Seville

MSE1604 – Froisy Mylar



A subtle crisscross pattern sits atop linen-inspired grounds in Seville. This pattern is brought to life by its extensive color palate, which ranges from neutrals and metallics to Mylar.

Other Available Colors:



## Specifications

Content Fabric backed Vinyl

Width 52/54"

Weight (oz/lyd) 20

Weight (oz/sqyd) 13.33

Type Type II

Backing Osnaburg

Pattern Match Random non-reversible

Fire Rating Class A

Flame Spread 5

Smoke Developed 35

## Environmental Attributes

NSF 342

CA 01350

## Features

Pre consumer recycled content

<https://www.mdcwall.com/go/sku/MSE1604>