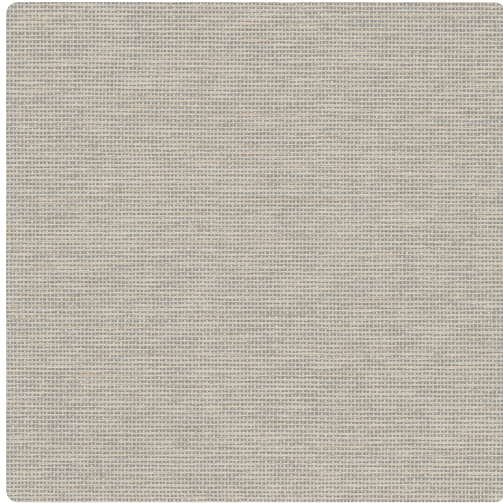


Madagascar

TFC1763 – Moor



Full Repeat:



Other Available Colors:



Earthbound Structure with a Dynamic Hand

Specifications

Width 54"

Weight 20oz Type II

Backing Non-Woven

Pattern Match Reversible Hang / Random Match

Fire Rating ASTM E84 Class A Fire Rated

Environmental Attributes

LEED Compliant

CA 01350

Features

Printed with Water-Based inks

<https://www.mdcwall.com/go/sku/TFC1763>