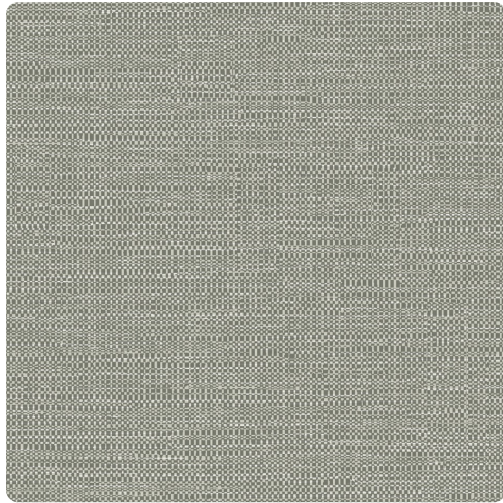


Chester

TFC1926 – Drift



Full Repeat:



Other Available Colors:



Chester by Thom Filicia is a study in understated style, offering the rich texture of a classic textile look. Its subtle weave pattern brings depth and dimension, making it a versatile choice for any space. Effortlessly refined, Chester delivers timeless appeal with a modern touch.

Specifications

Width 54"

Weight 20 oz Type II

Backing Osnaburg

Pattern Match Reversible Hang / Random Match

Fire Rating ASTM E84 Class A Fire Rated

<https://www.mdcwall.com/go/sku/TFC1926>