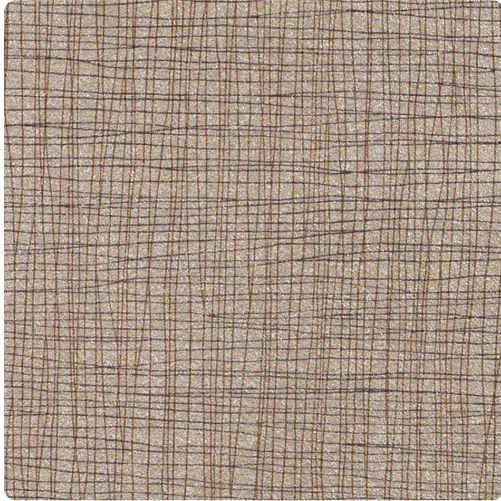


# Crosslines

W2CC10 – Chrome



Other Available Colors:



A loose weave of colored fibers illuminates Crossline background.

## Specifications

Width 54"

Roll Length 30 yards

Weight (oz/lyd) 20

Weight (oz/sqyd) 13.33

Type Type II

Scrub Cycles 300

Pattern Match Random reversible

Fire Rating Class A

Tensile Strength 50 warp/55 fill

<https://www.mdcwall.com/go/sku/W2CC10>

## Environmental Attributes

NSF 342

Recyclable

CA 01350

CHPS

## Features

Heavy Metals Free

Formaldehyde free

Made in the USA

CE