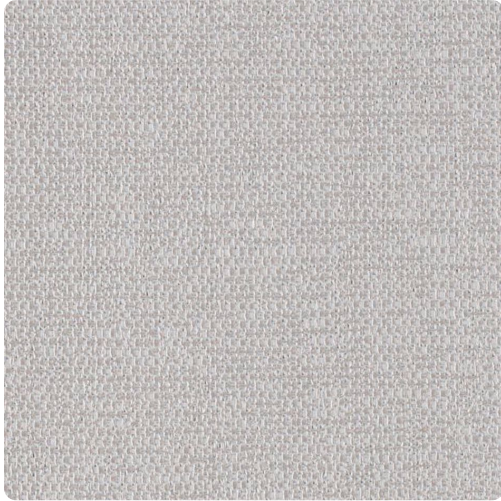


# Metalink

W2ML15 – Stardust

Other Available Colors:



Metalink's design projects the appearance of a tightly woven sheath of burnished metal throughout the use of metallic and pearled inks.

## Specifications

Content Fabric-backed Vinyl

Width 54"

Roll Length 30 yards

Weight (oz/lyd) 20

Weight (oz/sqyd) 13.33

Type Type II

Backing Osnaburg

Scrub Cycles 300

Pattern Match Random reversible

Fire Rating Class A

Flame Spread 20

Smoke Developed 45

Tensile Strength 50 warp/55 fill

## Environmental Attributes

NSF 342

Recyclable

CA 01350

CHPS

## Features

Heavy Metals Free

Formaldehyde free

Made in the USA

CE

<https://www.mdcwall.com/go/sku/W2ML15>