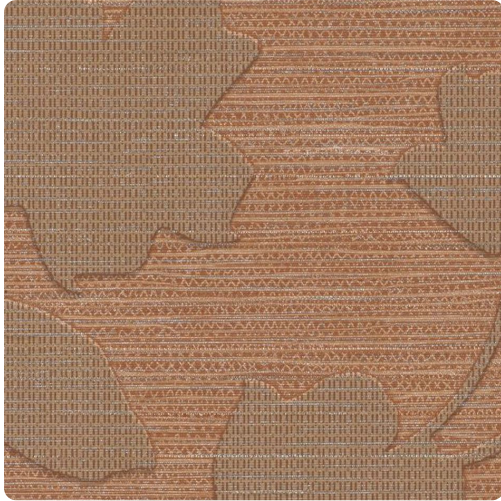


Perennial

W2PE17 – Chinese Lantern



Other Available Colors:



Bringing a bit of nature indoors, Perennial infuses pearl and metallic inks into boldly textured graphic leaves that seem to lay gingerly over a simulated horizontal grass weave.

Specifications

Width 52"

Roll Length 30 yards

Weight (oz/lyd) 20

Weight (oz/sqyd) 13.33

Type Type II

Scrub Cycles 300

Repeat 18" Vertical x 26" Horizontal

Pattern Match Non-reversible pattern match

Fire Rating Class A

Tensile Strength 50 warp/55 fill

Environmental Attributes

NSF 342

Recyclable

CA 01350

CHPS

Features

Heavy Metals Free

Formaldehyde free

Made in the USA

CE

<https://www.mdcwall.com/go/sku/W2PE17>