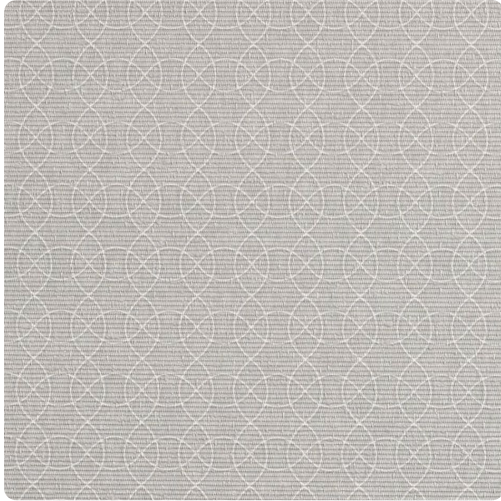


Sugar Rush

W2SR01 – Waning Moon



Sugar Rush is a tight, interlocking pattern of thin curvy lines that zing with energy across a skinny, corrugated texture.

Other Available Colors:



Specifications

Content Fabric-backed Vinyl

Width 54"

Roll Length 30 yards

Weight (oz/lyd) 20

Weight (oz/sqyd) 13.33

Type Type II

Backing Non-woven

Scrub Cycles 300

Repeat 18" Vertical x 26" Horizontal

Pattern Match Non-reversible straight across match

Fire Rating Class A

Flame Spread 25

Smoke Developed 45

Tensile Strength 50 warp/55 fill

Environmental Attributes

NSF 342

Recyclable

CA 01350

CHPS

Features

Heavy Metals Free

Formaldehyde free

Made in the USA

<https://www.mdcwall.com/go/sku/W2SR01>