

Matrix

Y46397MT – Symmetry

Vycon Contract

Matrix is the newest modern, contemporary design. Matrix delivers a hybrid of natural and industrial surfaces. Playing off the mathematical binary system there is an architectural feel to the structure of this design. When on the wall it becomes more about the movement of the overall design and not about the individual squares. The solid design adds a sense of cool but also has a sense of structure. Matrix can be used as a large scale design as well as a texture to any space. MDC has distribution rights of this product in select states as detailed below. Illinois, Indiana, Iowa, Kentucky, Michigan, Minnesota, North Dakota, Nebraska, Ohio, Western Pennsylvania, South Dakota, West Virginia and Wisconsin.

Specifications

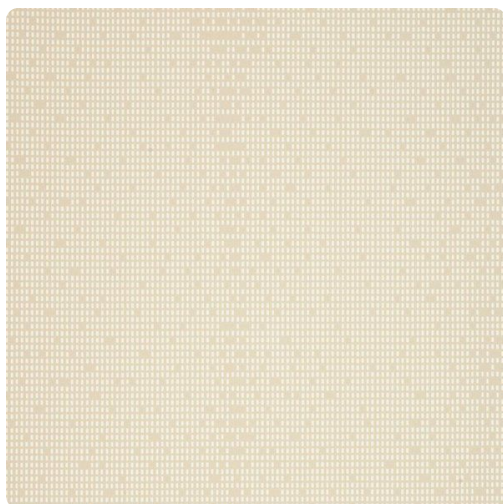
Content Fabric-backed Vinyl
Width 54"
Roll Length 30 yards
Weight (oz/lyd) 20
Weight (oz/sqyd) 13.33
Type Type II
Backing Osnaburg
Scrub Cycles 300
Pattern Match Random Reversible
Fire Rating Class A
Flame Spread 20
Smoke Developed 45
Tensile Strength 50 warp/55 fill

Environmental

NSF 342
Recyclable
CA 01350
CHPS

Features

Heavy Metals Free
Formaldehyde free
Made in the USA
CE



<https://www.mdcwall.com/go/sku/Y46397MT>