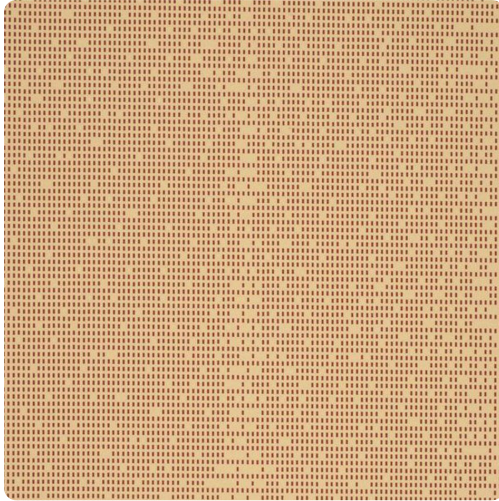


Matrix

Y46407MT – Tensor



Other Available Colors:



Matrix is the newest modern, contemporary design. Matrix delivers a hybrid of natural and industrial surfaces. Playing off the mathematical binary system there is an architectural feel to the structure of this design. When on the wall it becomes more about the movement of the overall design and not about the individual squares. The solid design adds a sense of cool but also has a sense of structure. Matrix can be used as a large scale design as well as a texture to any space. MDC has distribution rights of this product in select states as detailed below. Illinois, Indiana, Iowa, Kentucky, Michigan, Minnesota, North Dakota, Nebraska, Ohio, Western Pennsylvania, South Dakota, West Virginia and Wisconsin.

Specifications

Content Fabric-backed Vinyl

Width 54"

Roll Length 30 yards

Weight (oz/lyd) 20

Weight (oz/sqyd) 13.33

Type Type II

Backing Osnapburg

Scrub Cycles 300

Pattern Match Random Reversible

Fire Rating Class A

Flame Spread 20

Smoke Developed 45

Environmental Attributes

NSF 342

Recyclable

CA 01350

CHPS

Features

Heavy Metals Free

Formaldehyde free

Made in the USA

CE

<https://www.mdcwall.com/go/sku/Y46407MT>

