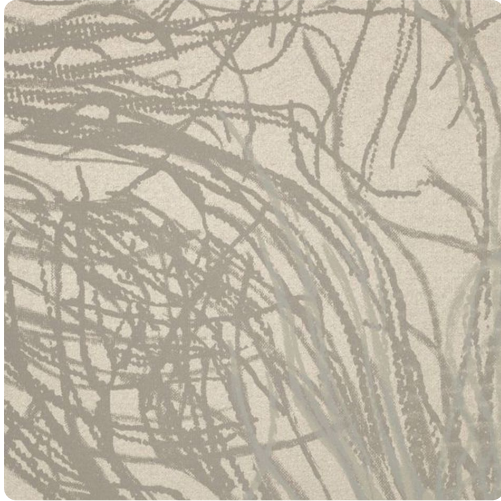


# Anemone

Y46631AN – Neptune



Other Available Colors:



Anemone is Vycon's first introduction by designer, Jill Malek, who gets her inspiration from movement in nature. The sea anemones and their natural habitat move and flow with brush-like strokes across the wall as if they were swimming. The duality of matte and shine gives an elegant look and feel that is a "must see" to appreciate. The layers of muted hues radiate sophistication. This show stopping, large scale design is available in 7 colorways that coordinate with Vycon's Allure. Make a statement with Anemone! MDC has distribution rights of this product in select states as detailed below. Illinois, Indiana, Iowa, Kentucky, Michigan, Minnesota, North Dakota, Nebraska, Ohio, Western Pennsylvania, South Dakota, West Virginia and Wisconsin.

## Specifications

Content Fabric-backed Vinyl

Width 52"

Roll Length 30 yards

Weight (oz/lyd) 20

Weight (oz/sqyd) 13.33

Type Type II

Backing Osnaburg

Scrub Cycles 300

Repeat 24" Vertical x 26" Horizontal

Pattern Match Non-reversible half drop match

Fire Rating Class A

Flame Spread 20

## Environmental Attributes

NSF 342

Recyclable

CA 01350

CHPS

## Features

Heavy Metals Free

Formaldehyde free

Made in the USA

CE

<https://www.mdcwall.com/go/sku/Y46631AN>

---

Smoke Developed 45

MDC Interior Solutions | 847.437.4000 | info@mdcwall.com | mdcwall.com

Tensile Strength 50 warp/55 fill

Wednesday, June 10, 2026