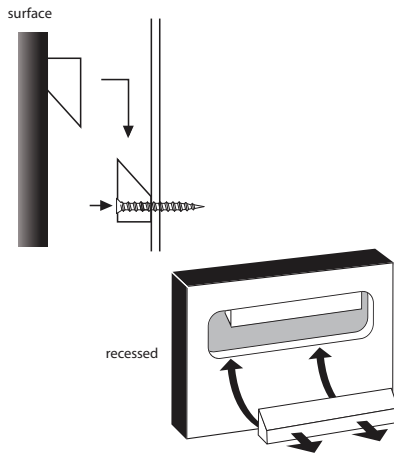




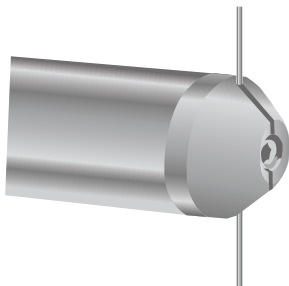
Stand-offs

A cylinder-like mounting system that is used with rigid materials such as Sintra or acrylic. The stand-off is anchored to the wall and holds the material a prescribed distance from the wall. Typically aluminum, it is available in a variety of sizes, lengths and shapes. MDC's standard sizes: 3/4" & 1" diameter; 1/2", 1" & 1.5" off the wall.



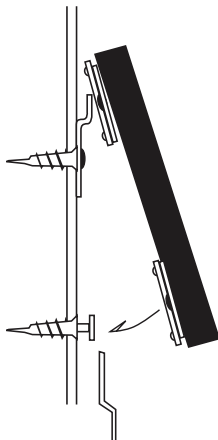
Cleat—French, surface & recessed

A mounting system that uses two opposing pieces - one attached to the design, one to the wall. With a recessed cleat, the half attached to the design is recessed so that the back of the graphic is flush with the wall once installed.



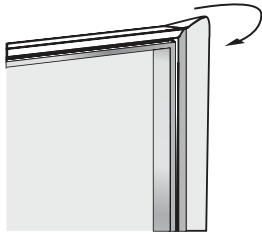
Cable suspension

Similar to a stand-off, a cable suspension system attaches to the printed material using a cylinder-like device - but instead of anchoring to the wall, the cylinder attaches to a cable. The cable can be attached to the wall, ceiling and/or the floor. The cable can also be attached directly to the display piece without the mounting cylinder.



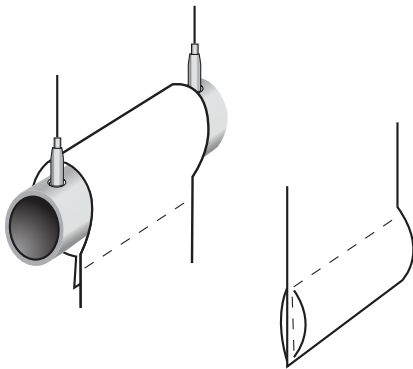
Security hardware

A theft deterrent mounting system used for Sintra and framed art panels that uses a series of clips and a locking screw to attach the design to the wall.



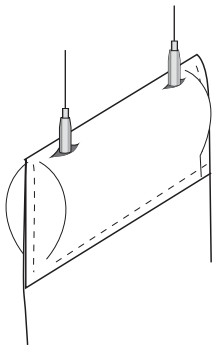
Wrapped

The design is wrapped around a panel/frame. A typical application would be acoustical panels or office partitions and unframed art.



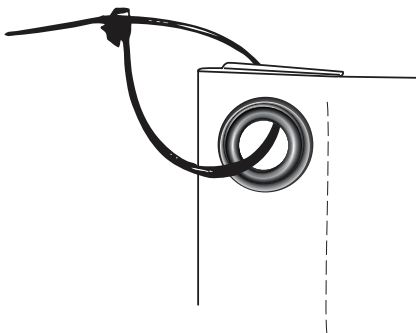
Hanging banner-opened pocket

This system has a pole pocket on the top and bottom. The top is opened and can be finished off with endcaps. The bottom is closed for a clean look. The material is usually vinyl.



Hanging banner-closed pocket

This system has a pole pocket on the top and bottom which is closed. The top is slotted to allow access to hanging system. The material is usually vinyl.



Grommeted banner

A simple brass or silver grommet that is embedded into all four corner and if necessary grommets on the sides.